

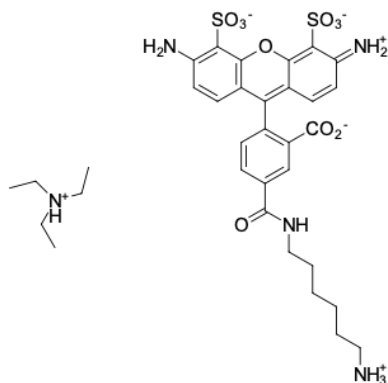
## AF 488 amine

<http://www.lumiprobe.com/p/af-488-amine-5>

AF 488 is a stable dye over a broad pH range (from 4 to 10) with the fluorescence peak in the green region (at 519 nm).

Conjugates of biomolecules with AF 488 can be used in flow cytometry, for example in multicolor staining. AF 488 is also used in cell microscopy due to its high photostability.

AF 488 amine is soluble in water and can be conjugated with electrophiles and participate in enzymatic transamination.



**Structure of AF 488 amine**

### General properties

|                     |  |
|---------------------|--|
| Appearance:         | orange crystals  |
| Molecular weight:   | 733.87   |
| Molecular formula:  | C <sub>33</sub> H <sub>43</sub> N <sub>5</sub> O <sub>10</sub> S <sub>2</sub>  |
| Solubility:         | good in water, DMF, DMSO   |
| Quality control:    | NMR <sup>1</sup> H and HPLC-MS (95+%)  |
| Storage conditions: | 24 months after receipt at -20°C in the dark. Transportation: at room temperature for up to 3 weeks. Desiccate. Avoid prolonged exposure to light.   |
| Legal statement:    | This Product is offered and sold for research purposes only. It has not been tested for safety and efficacy in food, drug, medical device, cosmetic, commercial or any other use. Supply does not express or imply authorization to use for any other purpose, including, without limitation, in vitro diagnostic purposes, in the manufacture of food or pharmaceutical products, in medical devices or in cosmetic products. |

### Spectral properties

|  |       |
|--|-------|
| Excitation/absorption maximum, nm:                   | 495   |
| $\epsilon$ , L·mol <sup>-1</sup> ·cm <sup>-1</sup> : | 71800 |
| Emission maximum, nm:                                | 519   |
| Fluorescence quantum yield:                          | 0.91  |
| CF <sub>260</sub> :                                  | 0.16  |
| CF <sub>280</sub> :                                  | 0.10  |