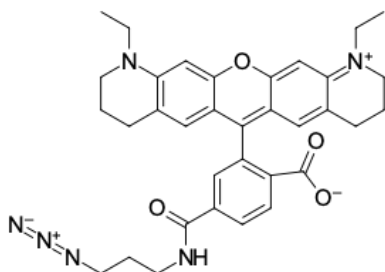


## ATT 565 azide

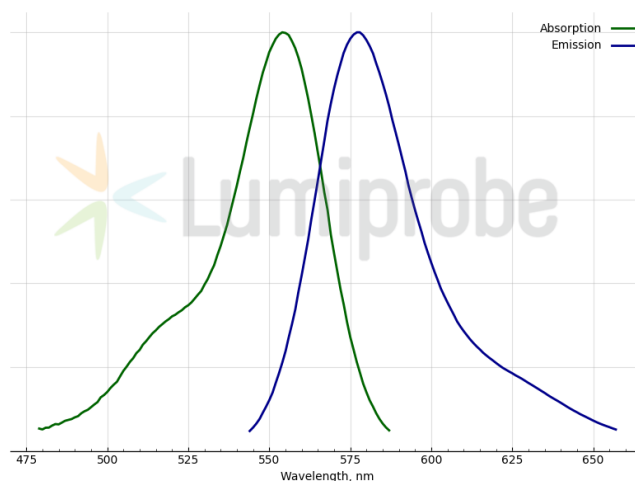
<http://www.lumiprobe.com/p/atto-565-azide-6>

ATT 565 is an orange-fluorescent rhodamine dye with high fluorescence quantum yield, strong thermal and photostability, and excellent water solubility. The dye is well-suited for high-resolution microscopy and single-molecule detection applications.

ATT 565 azide is a fluorescently labeled azide that reacts with alkynyl derivatives of biomolecules (terminal alkynes and cyclooctynes) via click reactions to form stable adducts.



Structure of ATT 565 azide, 6-isomer



Absorption and emission spectra of ATT 565

### General properties

Appearance:	dark purple-brown shiny crystals
Molecular weight:	592.70
Molecular formula:	C <sub>34</sub> H <sub>36</sub> N <sub>6</sub> O <sub>4</sub>
Solubility:	good in water, DMF, DMSO
Quality control:	NMR <sup>1</sup> H and HPLC-MS (95+%)
Storage conditions:	24 months after receipt at -20°C in the dark. Transportation: at room temperature for up to 3 weeks. Desiccate. Avoid prolonged exposure to light.
Legal statement:	Product is offered and sold for research purposes only. Product is not tested for safety and efficacy in food, drug, medical device, cosmetic, no express or implied authorization to use for any other purpose, including, without limitation, in vitro diagnostic purposes, for humans or animals or for commercial purposes.

### Spectral properties

Excitation/absorption maximum, nm:	554
Emission maximum, nm:	578