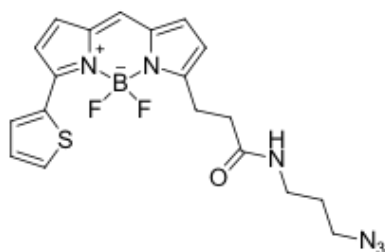


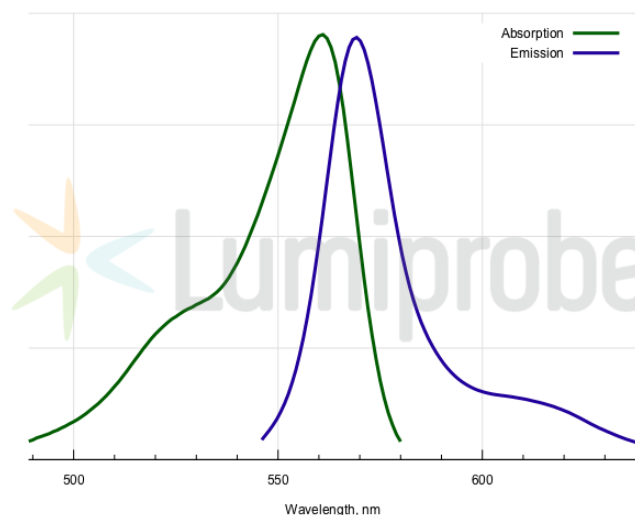
BDP® 558/568 azide

<http://www.lumiprobe.com/p/bdp-558-568-azide>

BDP 558/568 azide is a borondipyrromethene dye with azide functional group for click chemistry. Its spectra are close to Cyanine3 channel. The fluorophore has been used for lipid tracking as BDP 558/568 C₁₂, but azide functional groups allow easy conjugation with a wide variety of other molecules of interest.



Structure of BDP 558/568 azide



Absorption and emission spectra of BDP 558/568

General properties

Appearance:	dark colored solid
Mass spec M ⁺ increment:	428.1
Molecular weight:	428.27
Molecular formula:	C ₁₉ H ₁₉ N ₆ BF ₂ OS
Solubility:	soluble in many organic solvents (DCM, acetone, alcohols, DMF, DMSO), low solubility in water
Quality control:	NMR ¹ H, HPLC-MS (95%)
Storage conditions:	Storage: 24 months after receipt at -20°C in the dark. Transportation: at room temperature for up to 3 weeks. Avoid prolonged exposure to light. Desiccate.
Legal statement:	This Product is offered and sold for research purposes only. It has not been tested for safety and efficacy in food, drug, medical device, cosmetic, commercial or any other use. Supply does not express or imply authorization to use for any other purpose, including, without limitation, in vitro diagnostic purposes, in the manufacture of food or pharmaceutical products, in medical devices or in cosmetic products.

Spectral properties

Excitation/absorption maximum, nm:	561
ε, L·mol ⁻¹ ·cm ⁻¹ :	84400
Emission maximum, nm:	569
Fluorescence quantum yield:	0.68
CF ₂₆₀ :	0.00
CF ₂₈₀ :	0.07