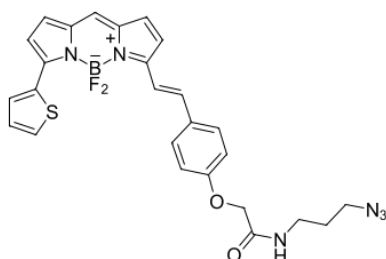


## BDP® 630/650 azide

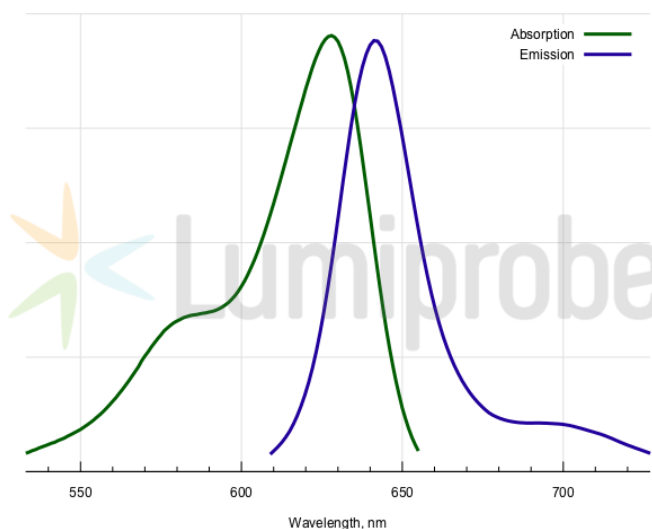
<http://www.lumiprobe.com/p/bdp-630-650-azide>

BDP 630/650 azide is a bright and photostable dye azide for the far red region of the spectrum for labeling using click chemistry.

This dye possesses a relatively long lifetime of the excited state and can therefore be used for fluorescence polarization experiments.



Structure of BDP 630/650 azide



Absorption and emission spectra of BDP 630/650

### General properties

Appearance:	dark colored powder
Mass spec M+ increment:	532.2
Molecular weight:	532.37
CAS number:	2183473-22-3
Molecular formula:	C <sub>26</sub> H <sub>23</sub> N <sub>6</sub> BF <sub>2</sub> O <sub>2</sub> S
IUPAC name:	Boron, [N-(3-azidopropyl)-2-[4-[2-[5-[[5-(2-thienyl)-2H-pyrrol-2-ylidene-κN]methyl]-1H-pyrrol-2-yl-κN]ethenyl]phenoxy]acetamidato]difluoro-, (T-4)- Coordination Compound
Solubility:	good in DMSO, DMF, acetonitrile, DCM
Quality control:	NMR <sup>1</sup> H, HPLC-MS (95%)
Storage conditions:	Storage: 24 months after receipt at -20°C in the dark. Transportation: at room temperature for up to 3 weeks. Avoid prolonged exposure to light. Desiccate.
Legal statement:	This Product is offered and sold for research purposes only. It has not been tested for safety and efficacy in food, drug, medical device, cosmetic, commercial or any other use. Supply does not express or imply authorization to use for any other purpose, including, without limitation, in vitro diagnostic purposes, in the manufacture of food or pharmaceutical products, in medical devices or in cosmetic products.

### Spectral properties

Excitation/absorption maximum, nm:	628
ε, L·mol <sup>-1</sup> ·cm <sup>-1</sup> :	97000
Emission maximum, nm:	642
Fluorescence quantum yield:	0.91
CF <sub>260</sub> :	0.029
CF <sub>280</sub> :	0.035

