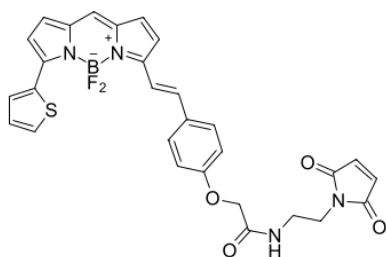


## BDP® 630/650 maleimide

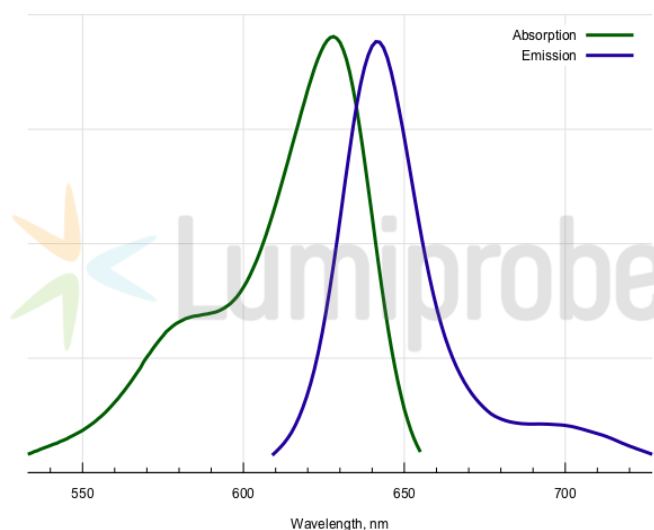
<http://www.lumiprobe.com/p/bdp-630-650-maleimide>

BDP 630/650 is a far red emitting borondipyrromethene based fluorophore for the Cyanine5 channel. Because of its relatively long lifetime of the excited state, this dye is particularly useful for fluorescence lifetime related measurements.

The reactive maleimide moiety allows to attach the dye to thiol groups in biomolecules, especially proteins and peptides.



**Structure of BDP 630/650 Maleimide**



**Absorption and emission spectra of BDP 630/650**

### General properties

Appearance:	dark colored solid
Mass spec M+ increment:	572.2
Molecular weight:	572.39
CAS number:	2183473-31-4
Molecular formula:	C <sub>29</sub> H <sub>23</sub> N <sub>4</sub> BF <sub>2</sub> O <sub>4</sub> S
Solubility:	good in DMF, DMSO
Quality control:	NMR <sup>1</sup> H, HPLC-MS (95%)
Storage conditions:	Storage: 24 months after receipt at -20°C in the dark. Transportation: at room temperature for up to 3 weeks. Avoid prolonged exposure to light. Desiccate.
Legal statement:	This Product is offered and sold for research purposes only. It has not been tested for safety and efficacy in food, drug, medical device, cosmetic, commercial or any other use. Supply does not express or imply authorization to use for any other purpose, including, without limitation, in vitro diagnostic purposes, in the manufacture of food or pharmaceutical products, in medical devices or in cosmetic products.

### Spectral properties

Excitation/absorption maximum, nm:	628
ε, L·mol <sup>-1</sup> ·cm <sup>-1</sup> :	97000
Emission maximum, nm:	642
Fluorescence quantum yield:	0.91
CF <sub>260</sub> :	0.029
CF <sub>280</sub> :	0.035