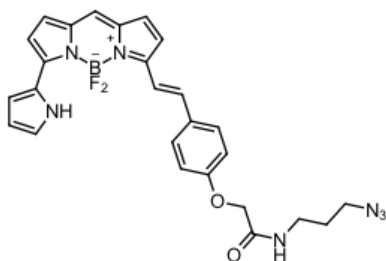


BDP® 650/665 azide

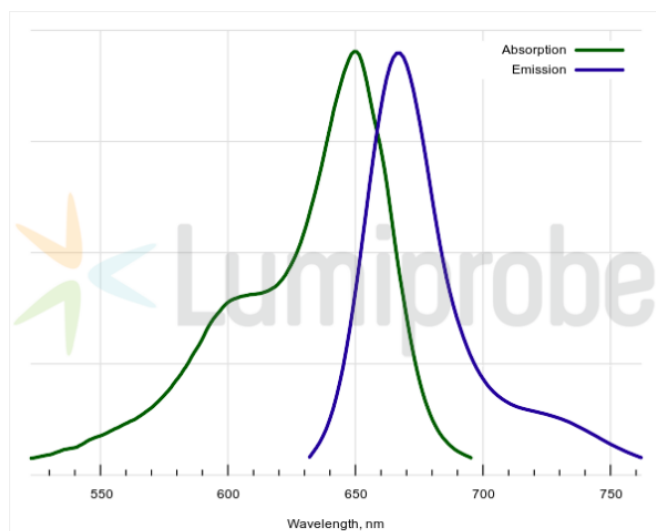
<http://www.lumiprobe.com/p/bdp-650-665-azide>

BDP 650/665 is a bright red-emitting borondipyrromethene dye compatible with the Cy5 channel found on many instruments. This is an azide derivative of BDP 650/665. It can be conjugated with terminal alkynes via copper-catalyzed reaction or with cycloalkynes via copper-free click chemistry.

BDP 650/665 azide can be conjugated with various terminal alkynes using copper-catalyzed click chemistry or cycloalkynes using a copper-free reaction.



Structure of BDP 650/665 azide



Absorption and emission spectra of BDP 650/665

General properties

| | |
|--------------------|--|
| Appearance: | dark colored solid |
| Molecular weight: | 515.32 |
| Molecular formula: | C ₂₆ H ₂₄ N ₇ BF ₂ O ₂ |
| Solubility: | good in DMF, DMSO, low in water |
| Quality control: | NMR ¹ H, HPLC-MS (95%) |
| Legal statement: | This Product is offered and sold for research purposes only. It has not been tested for safety and efficacy in food, drug, medical device, cosmetic, commercial or any other use. Supply does not express or imply authorization to use for any other purpose, including, without limitation, in vitro diagnostic purposes, in the manufacture of food or pharmaceutical products, in medical devices or in cosmetic products. |

Spectral properties

| | |
|--|-------|
| Excitation/absorption maximum, nm: | 649 |
| ε, L·mol ⁻¹ ·cm ⁻¹ : | 94000 |
| Emission maximum, nm: | 667 |
| Fluorescence quantum yield: | 0.52 |
| CF ₂₆₀ : | 0.04 |
| CF ₂₈₀ : | 0.04 |

BDP® is a trademark of Lumiprobe