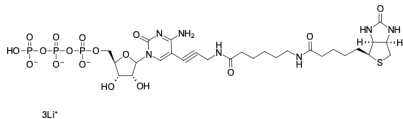


Biotin-11-CTP

<http://www.lumiprobe.com/p/biotin-11-ctp>

Biotin-11-CTP like other biotinylated nucleotides can be enzymatically incorporated into RNA. Biotin-11-CPT contains 11-atoms linker between biotin and CTP which improves avidin or streptavidin labeling in the related detection techniques.



Structure of Biotin-11-CTP

General properties

Appearance: off white solid

Molecular weight: 893.48

Molecular formula: $C_{28}H_{41}Li_3N_7O_{17}P_3S$

Solubility: good in water

Quality control: NMR 1H and HPLC-MS (95+%)

Storage conditions: 24 months after receipt at $-20^{\circ}C$ in the dark. Transportation: at room temperature for up to 3 weeks. Desiccate.