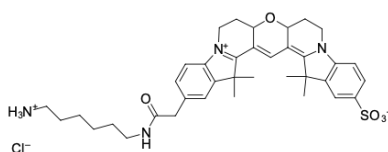


## Cyanine3B amine

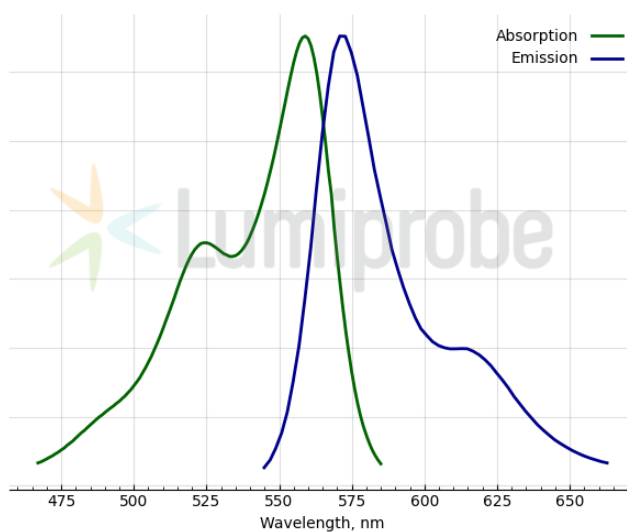
<http://www.lumiprobe.com/p/cy3b-amine>

Cyanine3B is a yellow-emitting cyanine dye that is an improved version of the Cyanine3 fluorophore with significantly higher fluorescence quantum yield and photostability.

This product is an amine-containing fluorescent dye. The amine group is separated from the fluorophore by a relatively long linker that facilitates conjugation. The aliphatic primary amine group can be coupled with various electrophiles (activated esters, epoxides, etc.) and used in enzymatic transamination labeling.



**Structure of Cyanine3B amine**



**Cyanine3B absorbance and emission spectra**

### General properties

Appearance:	dark red powder
Molecular weight:	695.33
Molecular formula:	C <sub>37</sub> H <sub>47</sub> ClN <sub>4</sub> O <sub>5</sub> S
Solubility:	good in DMF, DMSO
Quality control:	NMR <sup>1</sup> H and HPLC-MS (95+%)
Storage conditions:	24 months after receipt at -20°C in the dark. Transportation: at room temperature for up to 3 weeks. Desiccate.

### Spectral properties

Excitation/absorption maximum, nm:	559
ε, L·mol <sup>-1</sup> ·cm <sup>-1</sup> :	121000
Emission maximum, nm:	571
Fluorescence quantum yield:	0.68
CF <sub>260</sub> :	0.044
CF <sub>280</sub> :	0.077