

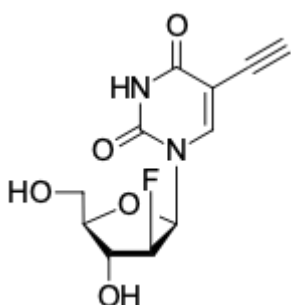
F-ara-EdU (2'-Deoxy-2'-fluoro-5-ethynyluridine)

<http://www.lumiprobe.com/p/f-ara-edu>

F-ara-EdU (2'-deoxy-2'-fluoro-5-ethynyluridine) is a synthetic analog of thymidine used to study *de novo* DNA synthesis and cell proliferation. It is a less cytotoxic alternative for [BrdU \(5-Bromo-2'-deoxyuridine\)](#) and [EdU \(5-Ethynyl-2'-deoxyuridine\)](#).

F-ara-EdU incorporates into replicating DNA during the S-phase of the cell cycle instead of natural thymidine. Metabolic incorporation of F-ara-EdU into DNA can be detected by copper-catalyzed click reaction with [fluorescent](#) or [biotin-labeled](#) azides.

In contrast to EdU, F-ara-EdU causes little or no cellular arrest or DNA synthesis inhibition. Therefore, F-ara-EdU is ideally suited for pulse-chase experiments aimed at birth-dating DNA *in vivo* and long-term cell survival estimation.



Structure of F-ara-EdU ((2'S)-2'-Deoxy-2'-fluoro-5-ethynyluridine)

General properties

Appearance: off-white powder

Molecular weight: 270.22

CAS number: 95740-26-4

Molecular formula: C₁₁H₁₁FN₂O₅

Solubility: in water, DMSO, DMF

Quality control: NMR ¹H and HPLC-MS (95+%)

Storage conditions: 24 months after receipt at -20°C in the dark. Transportation: at room temperature for up to 3 weeks. Desiccate.

Legal statement: Product is offered and sold for research purposes only. Product is not tested for safety and efficacy in food, drug, medical device, cosmetic, no express or implied authorization to use for any other purpose, including, without limitation, in vitro diagnostic purposes, for humans or animals or for commercial purposes.