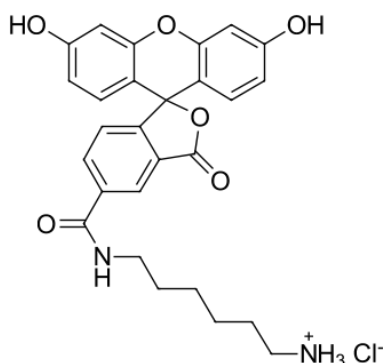


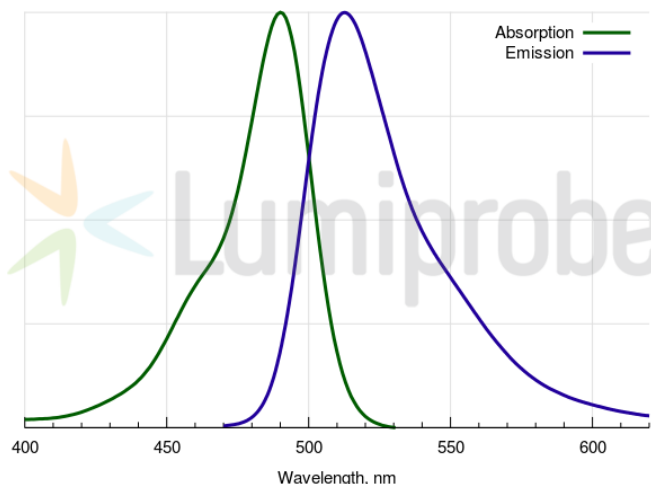
## FAM amine, 5-isomer

<http://www.lumiprobe.com/p/fam-amine-5>

Fluorescein (FAM) amine, isomerically pure dye (5-isomer). Unlike fluoresceinamine, this reagent contains a linker arm with an aliphatic amine group that is more reactive. It can react with electrophilic reagents like activated esters or epoxides, and be involved in enzymatic transamination.



**Structure of 5-FAM amine**



**FAM absorbance and emission spectra**

### General properties

Appearance:	yellow solid
Molecular weight:	510.97
CAS number:	2183440-41-5 (hydrochloride), 138589-19-2
Molecular formula:	C <sub>27</sub> H <sub>27</sub> N <sub>2</sub> ClO <sub>6</sub>
IUPAC name:	6-aminohexylaminocarbonylfluorescein hydrochloride
Solubility:	good in methanol, DMSO, DMF
Quality control:	NMR <sup>1</sup> H, HPLC-MS (95%)
Storage conditions:	24 months after receipt at -20°C in the dark. Transportation: at room temperature for up to 3 weeks. Avoid prolonged exposure to light. Desiccate.
Legal statement:	This Product is offered and sold for research purposes only. It has not been tested for safety and efficacy in food, drug, medical device, cosmetic, commercial or any other use. Supply does not express or imply authorization to use for any other purpose, including, without limitation, in vitro diagnostic purposes, in the manufacture of food or pharmaceutical products, in medical devices or in cosmetic products.

### Spectral properties

Excitation/absorption maximum, nm:	492
ε, L·mol <sup>-1</sup> ·cm <sup>-1</sup> :	74000
Emission maximum, nm:	517
Fluorescence quantum yield:	0.93
CF <sub>260</sub> :	0.22
CF <sub>280</sub> :	0.17