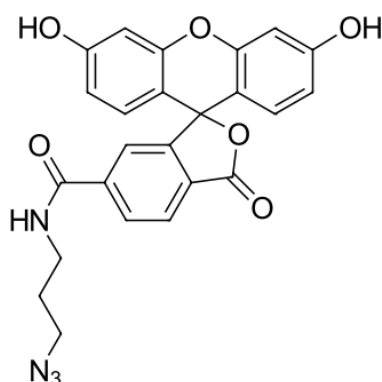


FAM azide, 6-isomer

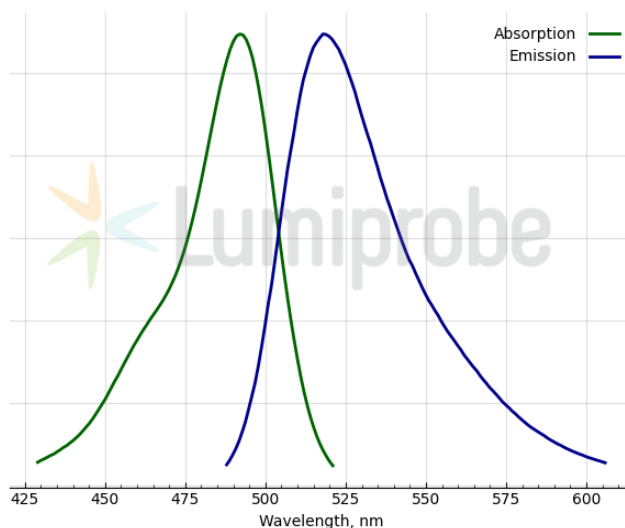
<http://www.lumiprobe.com/p/fam-azide-6>

FAM (fluorescein) azide, 6-isomer is a commonly used fluorescent dye azide for click chemistry. solid and 10 mM solution in DMSO, labeling reagent for click chemistry. This reagent is a pure 6-isomer.

It can replace DyLight 488.



Structure of 6-FAM azide



FAM absorbance and emission spectra

General properties

Appearance:	yellowish crystals
Molecular weight:	458.42
CAS number:	1386385-76-7
Molecular formula:	C ₂₄ H ₁₈ N ₄ O ₆
Solubility:	soluble in polar organic solvents (DMF, DMSO, alcohols)
Quality control:	NMR ¹ H, HPLC-MS (95%)
Storage conditions:	Storage: 24 months after receipt at -20°C in the dark. Transportation: at room temperature for up to 3 weeks. Avoid prolonged exposure to light.
Legal statement:	This Product is offered and sold for research purposes only. It has not been tested for safety and efficacy in food, drug, medical device, cosmetic, commercial or any other use. Supply does not express or imply authorization to use for any other purpose, including, without limitation, in vitro diagnostic purposes, in the manufacture of food or pharmaceutical products, in medical devices or in cosmetic products.

Spectral properties

Excitation/absorption maximum, nm:	492
ε, L·mol ⁻¹ ·cm ⁻¹ :	74000
Emission maximum, nm:	517
Fluorescence quantum yield:	0.93
CF ₂₆₀ :	0.22
CF ₂₈₀ :	0.17