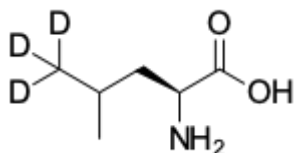


L-Leucine-d3

<http://www.lumiprobe.com/p/l-leucine-d3>

L-leucine-5,5,5-d3 is a stable isotope labeled amino acid L-leucine, is used in the quantitative determination of proteins using mass spectrometry (MS) and as a tracer in metabolic research.



Structure of L-Leucine-d3

General properties

Appearance: white powder

Molecular weight: 134.19

CAS number: 87828-86-2

Molecular formula: $C_6H_{10}D_3NO_2$

IUPAC name: (2S)-2-amino-5,5,5-trideuterio-4-methylpentanoic acid

Solubility: in water

Quality control: NMR 1H and HPLC-MS (95+ %, D: 98+ %)

Storage conditions: 24 months after receipt at -20°C in the dark. Transportation: at room temperature for up to 3 weeks. Desiccate.

Legal statement: This Product is offered and sold for research purposes only. It has not been tested for safety and efficacy in food, drug, medical device, cosmetic, commercial or any other use. Supply does not express or imply authorization to use for any other purpose, including, without limitation, in vitro diagnostic purposes, in the manufacture of food or pharmaceutical products, in medical devices or in cosmetic products.