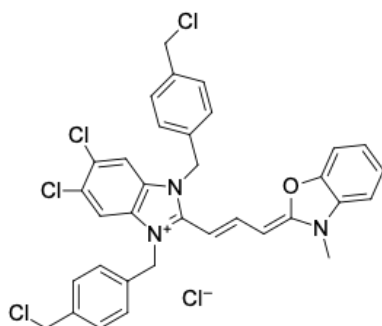


## LumiTracker® Mito Green FM

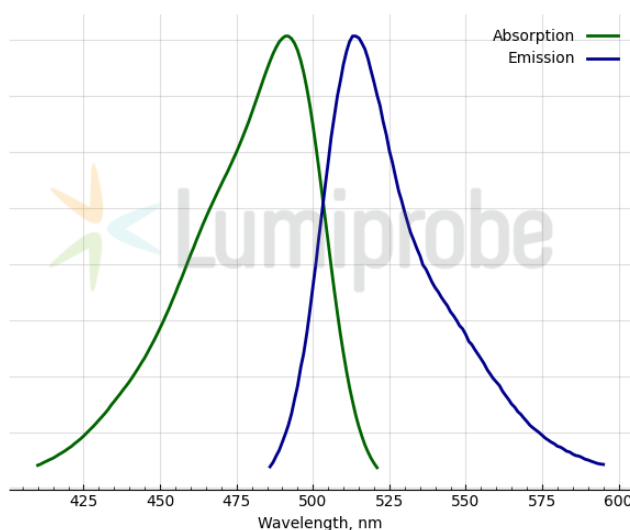
<http://www.lumiprobe.com/p/mitotracker-green-fm>

LumiTracker Mito Green FM is a cationic green-fluorescent dye that stains mitochondria in live cells. The dye passively diffuses across the plasma membrane and selectively accumulates in active mitochondria based on their membrane potential; therefore, it is often used to assess cells' health and as a dye for mitochondrial localization.

The fluorescence of LumiTracker Mito Green FM disappears after fixation with aldehydes, so this dye is only suitable for working with living cells.



**Structure of LumiTracker Mito Green FM**



**Absorption and emission spectra of Mito Green FM**

### General properties

Appearance:	orange solid
Molecular weight:	671.88
Molecular formula:	C <sub>34</sub> H <sub>28</sub> Cl <sub>5</sub> N <sub>3</sub> O
Quality control:	NMR <sup>1</sup> H and HPLC-MS (95+%)
Storage conditions:	24 months after receipt at -20°C in the dark. Transportation: at room temperature for up to 3 weeks. Desiccate.
Legal statement:	Product is offered and sold for research purposes only. Product is not tested for safety and efficacy in food, drug, medical device, cosmetic, no express or implied authorization to use for any other purpose, including, without limitation, in vitro diagnostic purposes, for humans or animals or for commercial purposes.

### Spectral properties

Excitation/absorption maximum, nm:	491
ε, L·mol <sup>-1</sup> ·cm <sup>-1</sup> :	93500
Emission maximum, nm:	513