

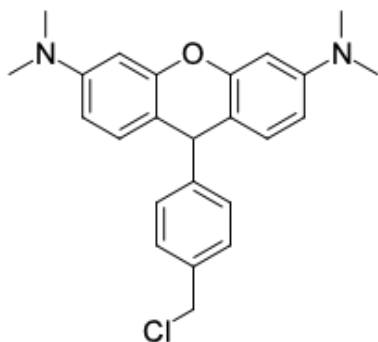
## LumiTracker® Mito Orange CM-H2TMRos

<http://www.lumiprobe.com/p/mitotracker-orange-cm-h2tmros>

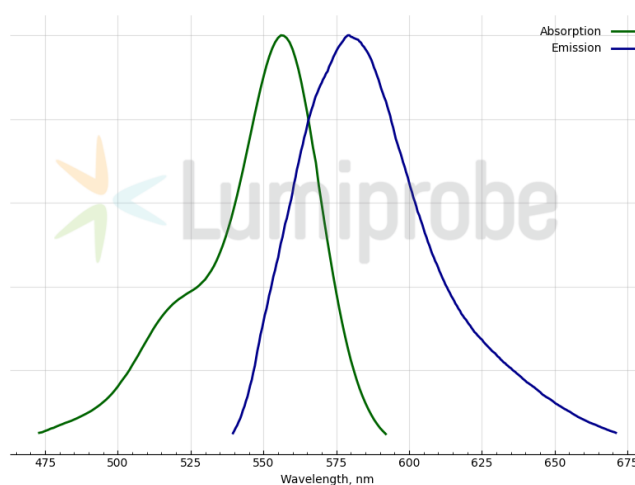
LumiTracker® Mito Orange CM-H2TMRos is a cationic, orange-fluorescent dye for staining active mitochondria in live cells. CM-H2TMRos passively diffuses across the plasma membrane and selectively accumulates in active mitochondria based on their membrane potential. CM-H2TMRos is a reduced, nonfluorescent version of the CMTMRos dye that becomes fluorescent when oxidized at the mitochondrial membrane.

LumiTracker Mito Orange CM-H2TMRos can be used both to indicate cell health and mitochondria localization.

The fluorescent signal from CMTMRos is well retained in the mitochondria after aldehyde fixation and detergent permeabilization and is compatible with subsequent immunocytochemistry or in situ hybridization procedures.



**Structure of LumiTracker Mito Orange CM-H2TMRos**



**Absorption and emission spectra of LumiTracker® Mito Orange CM-H2TMRos**

### General properties

Appearance:	violet powder
Molecular weight:	392.93
Molecular formula:	C <sub>24</sub> H <sub>25</sub> ClN <sub>2</sub> O
Quality control:	NMR <sup>1</sup> H and HPLC-MS (95+%)
Storage conditions:	24 months after receipt at -20°C in the dark. Transportation: at room temperature for up to 3 weeks. Desiccate.
Legal statement:	This Product is offered and sold for research purposes only. It has not been tested for safety and efficacy in food, drug, medical device, cosmetic, commercial or any other use. Supply does not express or imply authorization to use for any other purpose, including, without limitation, in vitro diagnostic purposes, in the manufacture of food or pharmaceutical products, in medical devices or in cosmetic products.

### Spectral properties

Excitation/absorption maximum, nm:	555
Emission maximum, nm:	578