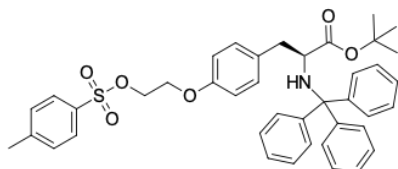


TE-L-Tyrosine (FET-precursor)

<http://www.lumiprobe.com/p/o-tosyloxyethyl-n-trityl-tyrosine-tert-butyl-ester>

TE-L-Tyrosine (O-Tosyloxyethyl-N-trityl-tyrosine tert-butyl ester or TET) is a precursor for O-(2-[¹⁸F]fluoroethyl)-L-tyrosine (FET) — a widely used F18-labeled amino acid tracer for positron emission tomography and computed tomography (PET/CT).

FET is useful in clinical applications for amino acid PET imaging, e.g. amino acid transport in brain tumors and differentiation of tumor tissues.



Structure of TE-L-Tyrosine

General properties

Appearance: white powder

Molecular weight: 677.86

CAS number: 478037-15-9

Molecular formula: C₄₁H₄₃NO₆S

Solubility: soluble in organic solvents

Quality control: NMR ¹H and HPLC-MS (95+%)

Storage conditions: 24 months after receipt at -20°C in the dark. Transportation: at room temperature for up to 3 weeks. Desiccate.

Legal statement: Product is offered and sold for research purposes only. Product is not tested for safety and efficacy in food, drug, medical device, cosmetic, no express or implied authorization to use for any other purpose, including, without limitation, in vitro diagnostic purposes, for humans or animals or for commercial purposes.