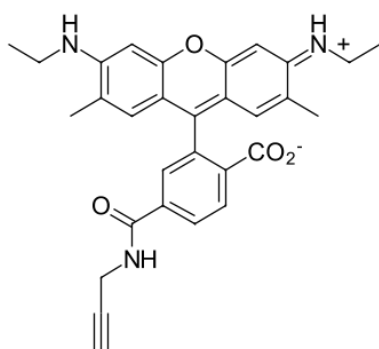


## R6G alkyne, 6-isomer

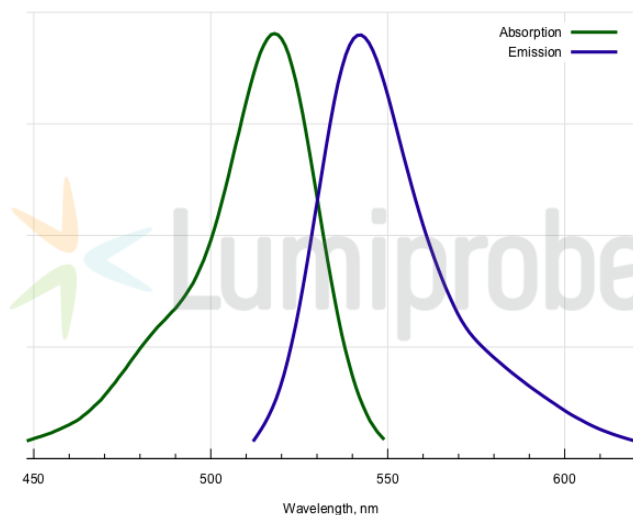
<http://www.lumiprobe.com/p/r6g-alkyne-6>

Rhodamine 6G (R6G) is a xanthene dye of rhodamine series. Compared to fluorescein, its emission is shifted to red. It is also much more photostable. The fluorophore has a high quantum yield.

This R6G product contains a terminal alkyne moiety for the conjugation with azides in the presence of copper (I) catalyst.



**Structure of 6-R6G alkyne**



**Absorption and emission spectra of 6-R6G**

### General properties

Appearance:	dark colored solid
Mass spec M+ increment:	494.2
Molecular weight:	495.57
Molecular formula:	C <sub>30</sub> H <sub>29</sub> N <sub>3</sub> O <sub>4</sub>
Solubility:	good in DMF, DMSO, alcohols
Quality control:	NMR <sup>1</sup> H, HPLC-MS (95%)
Storage conditions:	Storage: 24 months after receipt at -20°C in the dark. Transportation: at room temperature for up to 3 weeks. Avoid prolonged exposure to light. Desiccate.
Legal statement:	This Product is offered and sold for research purposes only. It has not been tested for safety and efficacy in food, drug, medical device, cosmetic, commercial or any other use. Supply does not express or imply authorization to use for any other purpose, including, without limitation, in vitro diagnostic purposes, in the manufacture of food or pharmaceutical products, in medical devices or in cosmetic products.

### Spectral properties

Excitation/absorption maximum, nm:	518
ε, L·mol <sup>-1</sup> ·cm <sup>-1</sup> :	116000
Emission maximum, nm:	542
Fluorescence quantum yield:	0.95
CF <sub>260</sub> :	0.18
CF <sub>280</sub> :	0.17