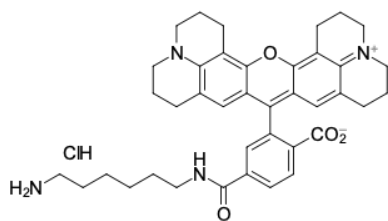


ROX amine, 6-isomer

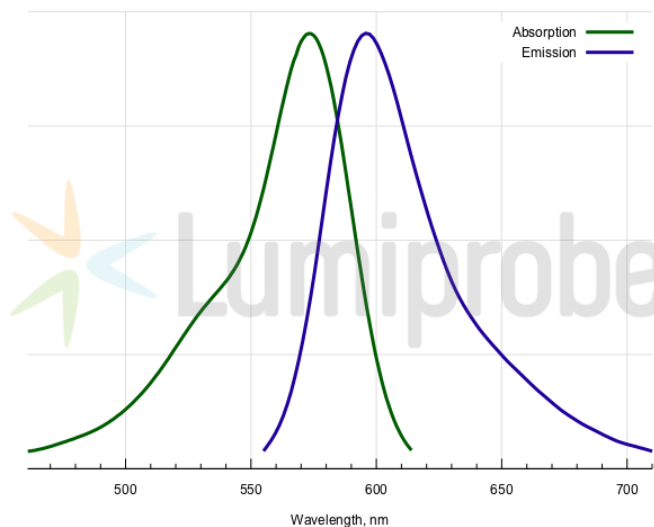
<http://www.lumiprobe.com/p/rox-amine-6>

This product is an amine derivative of ROX (Rhodamine X, Rhodamine 101) dye with an amine group separated from the fluorophore by a long linker that facilitates conjugation. The aliphatic primary amine group can be coupled with various electrophiles (activated esters, epoxides, etc.) and used in enzymatic transamination labeling.

ROX is a red-emitting fluorophore possessing high brightness and fluorescence quantum yield. This reagent is a pure 6-isomer.



Structure of ROX amine, 6-isomer



Absorption and emission spectra of ROX

General properties

Appearance:	violet powder
Molecular weight:	669.27
Molecular formula:	C ₃₉ H ₄₅ ClN ₄ O ₄
Solubility:	good in DMSO, DMF
Quality control:	NMR ¹ H and HPLC-MS (95+%)
Storage conditions:	24 months after receipt at -20°C in the dark. Transportation: at room temperature for up to 3 weeks. Desiccate. Avoid prolonged exposure to light.

Spectral properties

Excitation/absorption maximum, nm:	570
ε, L·mol ⁻¹ ·cm ⁻¹ :	93000
Emission maximum, nm:	591
Fluorescence quantum yield:	1.0
CF ₂₆₀ :	0.62
CF ₂₈₀ :	0.49