

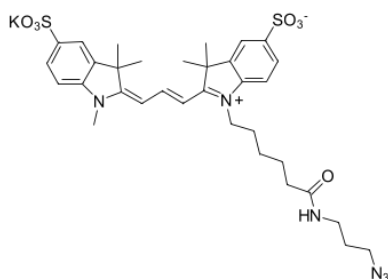
## sulfo-Cyanine3 azide

<http://www.lumiprobe.com/p/sulfo-cy3-azide>

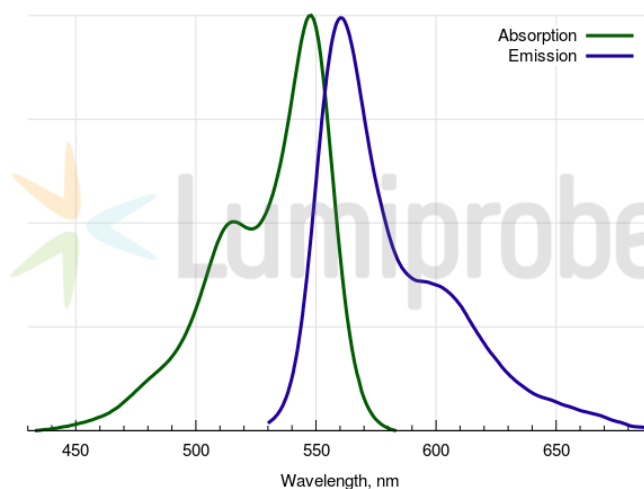
sulfo-Cyanine3 azide is a water-soluble dye azide for click chemistry. Absorbance and emission of the dye are identical to Cy3® fluorophore.

Brightness and photostability of the fluorophore, together with high water solubility, make this reagent an ideal choice for click chemistry labeling various molecules in the aqueous phase.

Click reaction can be carried out in pure water without the need to use organic co-solvent. The reagent is designed for the labeling of sensitive molecules and even intact biological objects.



**Sulfo-Cyanine3 azide structure**



**Sulfo-Cyanine3 absorbance and emission spectra**

### General properties

Appearance:	dark red crystals
Molecular weight:	736.94
CAS number:	2055138-89-9 (sodium salt), 1658416-54-6
Molecular formula:	C <sub>33</sub> H <sub>41</sub> N <sub>6</sub> KO <sub>7</sub> S <sub>2</sub>
Solubility:	soluble in water (0.62 M = 456 g/L), DMF, DMSO
Quality control:	NMR <sup>1</sup> H, HPLC-MS (95%)
Storage conditions:	Storage: 24 months after receipt at -20°C in the dark. Transportation: at room temperature for up to 3 weeks. Avoid prolonged exposure to light.
Legal statement:	This Product is offered and sold for research purposes only. It has not been tested for safety and efficacy in food, drug, medical device, cosmetic, commercial or any other use. Supply does not express or imply authorization to use for any other purpose, including, without limitation, in vitro diagnostic purposes, in the manufacture of food or pharmaceutical products, in medical devices or in cosmetic products.

### Spectral properties

Excitation/absorption maximum, nm:	548
ε, L·mol <sup>-1</sup> ·cm <sup>-1</sup> :	162000
Emission maximum, nm:	563
Fluorescence quantum yield:	0.1
CF <sub>260</sub> :	0.03
CF <sub>280</sub> :	0.06