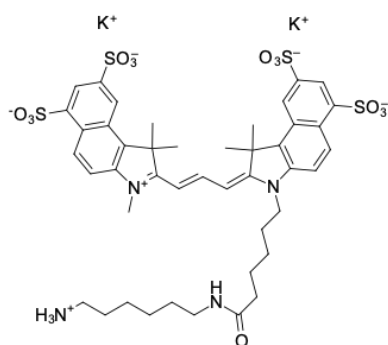


sulfo-Cyanine3.5 amine

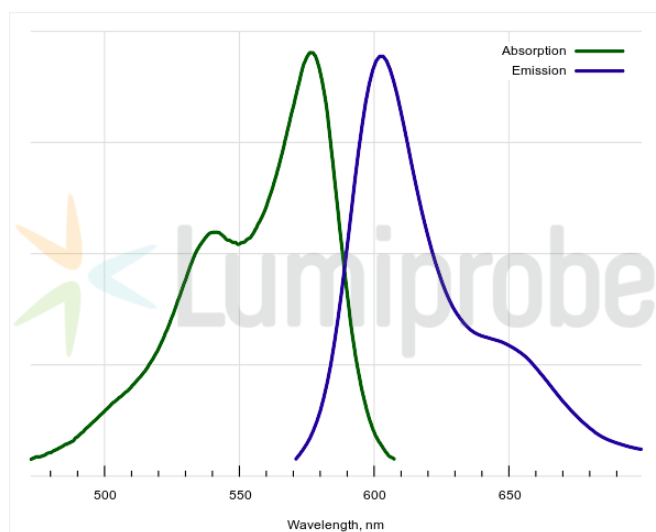
<http://www.lumiprobe.com/p/sulfo-cy35-amine>

sulfo-Cyanine3.5 is a cyanine fluorophore with fluorescence in the red-orange spectrum range. Its absorption and emission spectra are between those of Cyanine3 and Cyanine5. As well as other cyanines, sulfo-Cyanine3.5 has an outstanding extinction coefficient. The dye possesses four sulfonate groups, rendering it highly hydrophilic and water soluble.

This product is an amine-containing fluorescent dye. The amine group is separated from the fluorophore by a relatively long linker that facilitates conjugation. The aliphatic primary amine group can be coupled with various electrophiles (activated esters, epoxides, etc.) and used in enzymatic transamination labeling.



Structure of sulfo-Cyanine3.5 amine



Absorption and emission spectra of sulfo-Cyanine3.5

General properties

Appearance:	dark purple solid
Molecular weight:	1051.38
Molecular formula:	$C_{44}H_{52}K_2N_4O_{13}S_4$
Solubility:	good in water, DMSO, DMF
Quality control:	NMR 1H and HPLC-MS (95+%)
Storage conditions:	24 months after receipt at $-20^\circ C$ in the dark. Transportation: at room temperature for up to 3 weeks. Desiccate. Avoid prolonged exposure to light.

Spectral properties

Excitation/absorption maximum, nm:	576
ϵ , $L \cdot mol^{-1} \cdot cm^{-1}$:	139000
Emission maximum, nm:	603
Fluorescence quantum yield:	0.11
CF_{260} :	0.16
CF_{280} :	0.17