

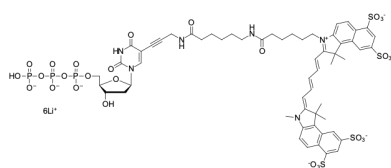
sulfo-Cyanine5.5 dUTP

<http://www.lumiprobe.com/p/sulfo-cy55-dutp>

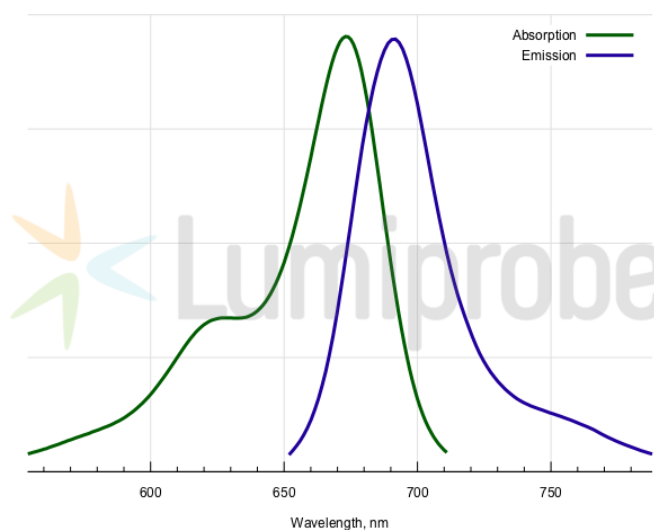
sulfo-Cyanine5.5 is a far red emitting dye. Since almost no biological sources of fluorescence background emit in its range, this fluorophore provides great signal to noise ratio.

Due to its extended amino-11-linker, this reagent provides a better alternative to aminoallyl derived triphosphates with dyes.

The QC of triphosphates includes HPLC-MS and enzymatic testing.



Structure of Sulfo-Cyanine5.5 dUTP



Absorption and emission spectra of sulfo-Cyanine5.5

General properties

Appearance:	blue solid
Molecular weight:	1554.97
Molecular formula:	$C_{58}H_{63}N_6Li_6O_{28}P_3S_4$
Quality control:	HPLC-MS (95%), testing in enzymatic reaction
Storage conditions:	Storage: 12 months after receipt at $-20^{\circ}C$ in the dark. Transportation: at room temperature for up to 3 weeks. Avoid prolonged exposure to light and excessive freeze-thaw cycles.
Legal statement:	This Product is offered and sold for research purposes only. It has not been tested for safety and efficacy in food, drug, medical device, cosmetic, commercial or any other use. Supply does not express or imply authorization to use for any other purpose, including, without limitation, in vitro diagnostic purposes, in the manufacture of food or pharmaceutical products, in medical devices or in cosmetic products.

Spectral properties

Excitation/absorption maximum, nm:	673
ϵ , $L \cdot mol^{-1} \cdot cm^{-1}$:	211000
Emission maximum, nm:	691
Fluorescence quantum yield:	0.21
CF_{260} :	0.09
CF_{280} :	0.11