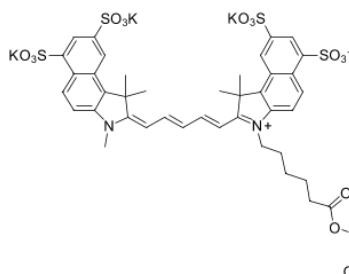


sulfo-Cyanine5.5 NHS ester

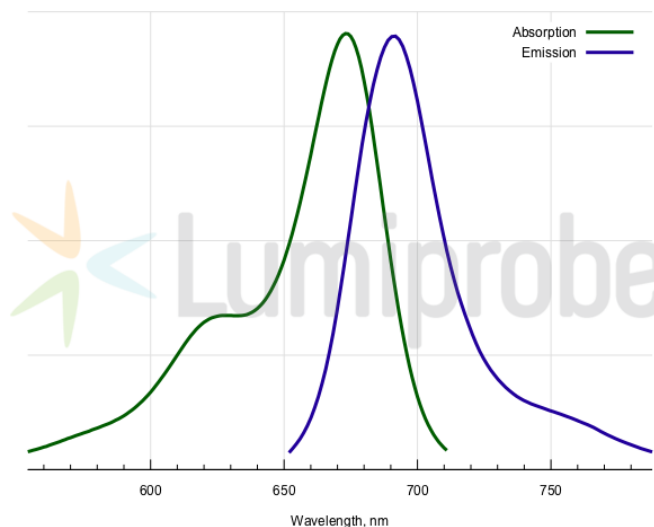
<http://www.lumiprobe.com/p/sulfo-cy55-nhs-ester>

sulfo-Cyanine5.5 NHS ester is an amine-reactive activated ester of sulfonated far-red Cyanine5.5 fluorophore, an analog of Cy5.5®. This is a reagent of choice for the labeling of antibodies, sensitive proteins, and others which require reactions in a purely aqueous environment or without any significant additions of organic co-solvents.

The dye is well-suited for non-invasive *in vivo* NIR imaging and applications requiring low fluorescent background.



Structure of sulfo-Cyanine5.5 NHS ester



Absorption and emission spectra of sulfo-Cyanine5.5

General properties

Appearance:	dark blue solid
Mass spec M+ increment:	884.15
Molecular weight:	1114.37
CAS number:	2419286-92-1
Molecular formula:	C ₄₄ H ₄₂ N ₃ K ₃ O ₁₆ S ₄
Solubility:	good in water, DMF, DMSO
Quality control:	NMR ¹ H, HPLC-MS (95%)
Storage conditions:	Storage: 12 months after receipt at -20°C in the dark. Transportation: at room temperature for up to 3 weeks. Avoid prolonged exposure to light. Desiccate.
Legal statement:	This Product is offered and sold for research purposes only. It has not been tested for safety and efficacy in food, drug, medical device, cosmetic, commercial or any other use. Supply does not express or imply authorization to use for any other purpose, including, without limitation, in vitro diagnostic purposes, in the manufacture of food or pharmaceutical products, in medical devices or in cosmetic products.

Spectral properties

Excitation/absorption maximum, nm:	675
ε, L·mol ⁻¹ ·cm ⁻¹ :	211000
Emission maximum, nm:	694
Fluorescence quantum yield:	0.21
CF ₂₆₀ :	0.09
CF ₂₈₀ :	0.11