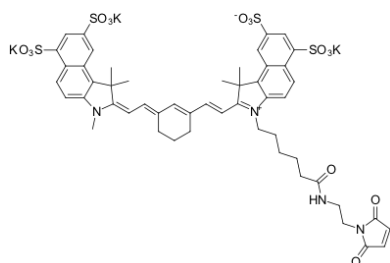


## sulfo-Cyanine7.5 maleimide

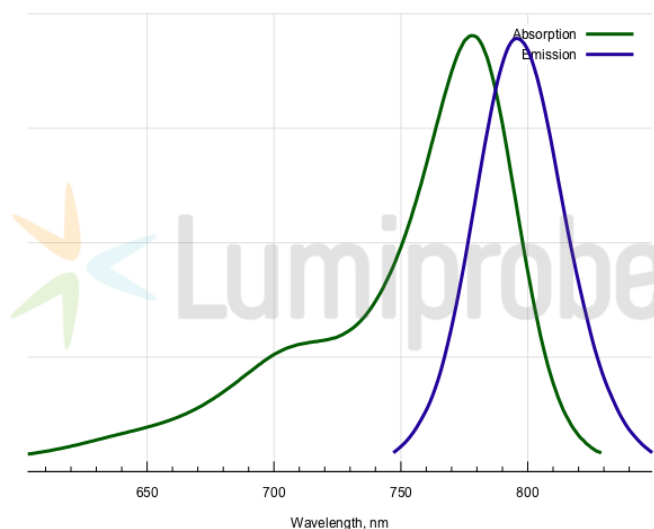
<http://www.lumiprobe.com/p/sulfo-cy75-maleimide>

sulfo-Cyanine7.5 is a near infrared fluorophore with absorption and emission ranges around 800 nm. Its spectral properties allow for the efficient leveraging of tissue NIR transparency window. The fluorophore is available as different reactive forms, this one is maleimide for the labeling of SH groups of proteins and peptides. The sulfo- version is highly hydrophilic.

Such labeled biomolecules are useful in biodistribution studies and visualization in intact organisms.



**Structure of sulfo-Cyanine7.5 maleimide**



**Absorption and emission spectra of sulfo-Cyanine7.5**

### General properties

Appearance:	dark colored solid
Mass spec M+ increment:	1090.3
Molecular weight:	1205.52
Molecular formula:	C <sub>51</sub> H <sub>51</sub> N <sub>4</sub> K <sub>3</sub> O <sub>15</sub> S <sub>4</sub>
Solubility:	good in water, DMF, DMSO
Quality control:	NMR <sup>1</sup> H, HPLC-MS (95%)
Storage conditions:	Storage: 12 months after receipt at -20°C in the dark. Transportation: at room temperature for up to 3 weeks. Avoid prolonged exposure to light. Desiccate.

### Spectral properties

Excitation/absorption maximum, nm:	788
ε, L·mol <sup>-1</sup> ·cm <sup>-1</sup> :	222000
Emission maximum, nm:	797
Fluorescence quantum yield:	0.21
CF <sub>260</sub> :	0.09
CF <sub>280</sub> :	0.09